



WEAVER

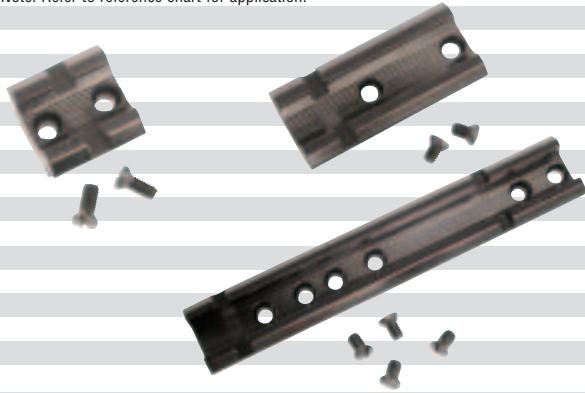
RINGS
MOUNTS & BASES
REFERENCE
CHART

2003

MOUNT BASES & RINGS

DETACHABLE TOP MOUNT BASES

Note: Refer to reference chart for application.



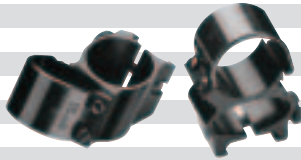
DETACHABLE TOP MOUNT RINGS

- 49030 1" Low Gloss Black
- 49040 1" Low Matte Black
- 49034 1" Low Silver
- 49071 1" Medium Gloss Black
- 49041 1" Medium Matte Black
- 49032 1" Medium Silver
- 49050 1" High Gloss Black
- 49042 1" High Matte Black
- 49033 1" High Silver
- 49080 1" Extra-High Gloss Black
- 49044 1" Extra-High Matte Black
- 49036 1" Extra-High Silver
- 49122 30mm Low Gloss Black
- 49121 30mm Low Matte Black
- 49131 30mm Low Silver
- 49110 30mm High Gloss Black
- 49120 30mm High Matte Black
- 49130 30mm High Silver



DETACHABLE SEE-THRU RINGS

- 49513 1" Gloss Black
- 49523 1" Matte Black
- 49522 1" Silver
- 49512 1" Ext. Gloss Black
- 49510 1" Ext. Matte Black
- 49524 1" Dual Ext. Gloss Black
- 49525 1" Dual Ext. Matte Black



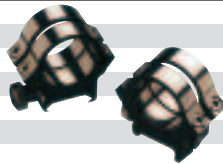
DETACHABLE EXTENSION TOP MOUNT RINGS

- 49090 1" Medium Gloss Black
- 49091 1" Medium Matte Black
- 49092 1" Medium Silver
- 49060 1" High Gloss Black*
- 49043 1" High Matte Black*
- 49035 1" High Silver*
- 49061 1" High Dual Ext. Gloss Black**
- 49045 1" High Dual Ext. Matte Black**
- 49038 1" High Dual Ext. Silver**
- 48448 1" Extra High Gloss Black
- 48449 1" Extra High Matte Black
- 49512 1" See-Thru Gloss Black
- 49510 1" See-Thru Matte Black
- 49524 1" Dual See-Thru Gloss Black
- 49525 1" Dual See-Thru Matte Black
- 49155 30mm Low Ext. Gloss Black*
- 49150 30mm Low Ext. Matte Black*
- 49156 30mm High Ext. Gloss Black*
- 49152 30mm High Ext. Matte Black
- 49153 30mm High Ext. Silver*



4 X 4™ RINGS

- 49074 1" Medium Gloss Black
- 49046 1" Medium Matte Black
- 49052 1" High Gloss Black
- 49047 1" High Matte Black
- 49062 1" High Ext. Gloss Black
- 49048 1" High Ext. Matte Black



PIVOT MOUNTS

Pivot Mount Rings Gloss Black:

- 49220 1" Standard
- 49230 1" High

Pivot Bases Gloss Black:

- 48135 135 (each)
- 48136 136 (each)
- 48146 146 (each)
- 48147 147 (each)
- 48153 153 (one piece)
- 48154 154 (each)
- 48155 155 (each)
- 48161 161 (each)
- 48162 162 (one piece)
- 48163 163A (one piece)
- 48193 193 (one piece)



** Package includes two detachable extension rings.

* Package includes one standard detachable ring and one detachable extension ring.

SURE GRIP RINGS

- 49160 1" Medium Gloss Black
- 49163 1" Medium Matte Black
- 49161 1" High Gloss Black
- 49164 1" High Matte Black
- 49162 1" Extra High Gloss Black
- 49165 1" Extra High Matte Black



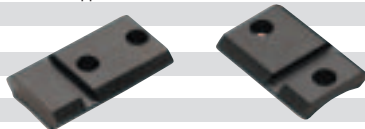
GRAND SLAM™ STEEL RINGS

- 48204 1" Medium Matte Black
- 48205 1" High Matte Black
- 48206 1" Extra High Matte Black
- 48207 1" Super High Matte Black
- 48208 30mm Low Matte Black
- 48209 30mm High Matte Black
- 48210 30mm Ex-High Matte Black



GRAND SLAM STEEL BASES

Note: Refer to reference chart for application.



DETACHABLE SIDE MOUNTS

Bases Gloss Black:

- 48401 1
- 48402 2
- 48403 3A
- 48412 3B
- 48413 3C
- 48415 3D
- 48405 5
- 48407 7
- 48408 8
- 48409 M
- 48416 10M Matte Black

Rings & Bracket (as shown):

- 49350 1" High
- 49340 1" High (Long Style)



MOUNT BASES & RINGS

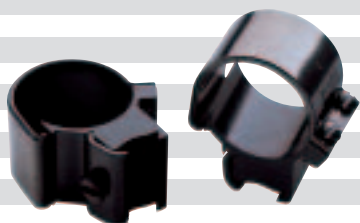
.22 TIP-OFF® MOUNTS

2-Hole Caps:

- 49440 1" 3/8" Grooved Receiver Gloss Black
- 49039 1" 3/8" Grooved Receiver Silver
- 49640 7/8" Gloss Black

4-Hole Caps:

- 49819 1" Gloss Black
- 49821 1" Silver



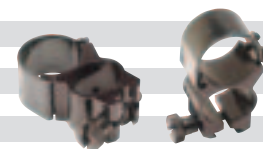
.22 TIP-OFF® SEE-THRU MOUNTS

2-Hole Caps:

- 49514 1" See-Thru Gloss Black
- 49517 1" See-Thru Silver

4-Hole Caps:

- 49515 1" See-Thru Gloss Black
- 49733 1" See-Thru Silver



TIP-OFF ADAPTER BASES

Bases:

- 48203 TO-1 Gloss Black (for Lee-Enfield; one-piece)
- 48201 TO-9* Gloss Black (Ruger 10/22)
- 48009 TO-9S* Silver (Ruger 10/22)
- 48505 TO-9M* Gloss Black (Ruger 10/22 Matte Black)
- 48202 TO-10* to convert 3/8" receiver to QD
- 48511 TO-11 Gloss Black (Ruger 96/22 & 96/22M)

TO-9



TO-10

* May also be used with Detachable Top Mount Rings.

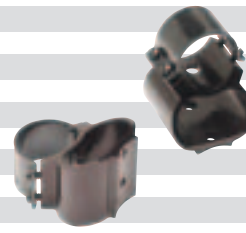
PRO-VIEW™ MOUNTS

- 49811 Ruger 10/22 Gloss Black
- 49812 Remington 700 Gloss Black
- 49814 Remington 4,6,7400,7600 Gloss Black
- 49816 Winchester 94 Angle Eject Gloss Black
- 49817 Marlin 336 Gloss Black
- 49818 Savage 110 Gloss Black



SEE-THRU MOUNTS

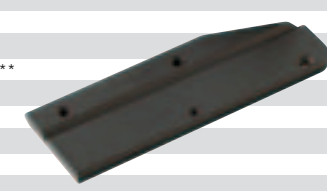
- 49711 Ruger 10/22 Gloss Black
- 49734 Ruger 10/22 Silver
- 49723 Ruger 77/22, 77/44, Mini-14 Ranch Gloss Black
- 49735 Ruger 77/22, 77/44, Mini-14 Ranch Silver
- 49724 Ruger 77 Gloss Black
- 49732 Ruger 77 Silver
- 49712 Remington 700 Gloss Black
- 49731 Remington 700 Silver
- 49714 Remington 4,6,7400,7600 Gloss Black
- 49715 Remington 740,742,7600 Gloss Black
- 49726 Remington 600, XP-100, 78 Gloss Black
- 49716 Winchester 94 Angle Eject Gloss Black
- 49718 Winchester 70 Gloss Black
- 49725 Winchester 88, 100 Gloss Black
- 49717 Savage 110 Gloss Black
- 49729 Savage 110 Silver
- 49719 Browning A-Bolt Gloss Black
- 49720 Browning BAR/LAR Gloss Black
- 49713 Marlin 336 Gloss Black
- 49721 FN Series Gloss Black
- 49727 Knight Mk-85 Black Powder Gloss Black
- 49736 TCA Thunderhawk Gloss Black
- 49722 Mauser 91 Series



CONVERTA-MOUNT™ SHOTGUN BASES

- 48302 Remington 870/1100, 11-87 (12 Ga./20 Ga. Ltw.)
- 48303 Mossberg 500 (12 Ga./20 Ga.)
- 48307 Winchester 1200, 1300, 1400, 1500, (12 Ga.) side bases**

**Must Drill & Tap



CONVERTA-MOUNT™ SHOTGUN BRACKETS

Standard Bracket (low-profile):

- 48301 Convert-A-Mount Bracket, All except Browning A5

See-Under Bracket:

- 48310 Winchester, Mossberg, Ithaca
- 48311 Remington 870



PISTOL MOUNT SYSTEM W/MED. RINGS

- 48601 301 Ruger Blackhawk, Super Blackhawk
- 48610 301S Ruger Blackhawk, Super Blackhawk
- 48602 302 Ruger Mini-14 Series
- 48607 302S Ruger Mini-14 Series
- 48604 304 Colt Python, Trooper MKIII, MKV
- 48605 305 Ruger Security Six
- 48606 306 Ruger 22 Auto Pistols
- 48620 306S Ruger 22 Auto Pistols
- 48609 307 S & W: Taurus L & current K frames w/Adj rear sights
- 48608 307S S & W: Taurus L & current K frames w/Adj rear sights
- 48611 308S Ruger Redhawk
- 48622 314 Ruger Single Six



CONVERTA-MOUNT™ SHOTGUN SYSTEMS

Standard System: (bracket, rings, base)

- 48870 Remington 870/1100, 11-87 (12 Ga./20 Ga. Ltw.) 1" medium rings
- 48880 Mossberg 500 (12 Ga.) 1" medium rings

See-Under System: (bracket, rings, base)

- 48881 Remington 870/1100, 11-87 (12 Ga./20 Ga. Ltw.) 1" medium rings
- 48882 Mossberg 500 (12 Ga.) 1" medium rings
- 48883 Winchester 1200, 1300, 1400, 1500 (12 Ga.) 1" medium rings**

**Must Drill & Tap



PISTOL BASES

- 48638 301 Ruger Blackhawk
- 48635 301S Ruger Blackhawk
- 48644 302 Ruger Mini-14 Series
- 48646 302S Ruger Mini-14 Series
- 48649 303 Colt Trooper Officer
- 48639 304 Colt Python, Trooper
- 48650 304S Colt Python, Trooper
- 48640 305 Ruger Security Six
- 48652 305S Ruger Security Six
- 48641 306 Ruger 22 Automatic
- 48637 306S Ruger 22 Automatic
- 48642 307 S & W L & K
- 48634 307S S & W L & K
- 48648 308S Ruger Redhawk
- 48643 314 Ruger Single Six



RIFLE MOUNT SYSTEMS (INCLUDES BASE(S) & MED. RINGS)

- 48763 Marlin 336
- 48793 Remington 4, 6, 7400, 7600
- 48736 Remington 700
- 48705 SKS System
- 48794 Winchester 94AE

MOUNT BASES & RINGS

WEAVER POLAR CAPS & LENS CAPS			SIMMONS RINGS	
Caps	Clear			
Part #	Lens Part #			
71001	71003	Size A, 1.000-1.080", (25.40-27.43mm)	49166	Silver/Medium
71091	71093	Size B, 1.090-1.210", (27.69-30.73mm)	49167	Black Gloss/Medium
71221	71223	Size C, 1.220-1.290", (30.99-32.77mm)	49168	Matte Black/Medium
71301	71303	Size D, 1.300-1.370", (33.02-34.80mm)	49169	Matte Black/22 Medium
71381	71383	Size E, 1.380-1.420", (33.05-36.07mm)	49170	Silver/22 Medium
71431	71433	Size F, 1.430-1.490", (36.32-37.85mm)	49171	Black Gloss/High
71501	71503	Size G, 1.500-1.540", (38.10-39.12mm)	49172	Matte Black/High
71551	71553	Size H, 1.550-1.600", (39.37-40.64mm)	49173	Silver/High
71611	71613	Size J, 1.610-1.660", (40.89-42.16mm)	49174	30mm/Matte Black/Medium
71671	71673	Size K, 1.670-1.750", (42.42-44.45mm)	49175	30mm/Matte Black/High
71761	71763	Size M, 1.760-1.830", (44.70-46.48mm)	49176	Matte Black/See-Thru
71841	71843	Size N, 1.840-1.950", (46.74-49.53mm)		
71961	71963	Size P, 1.960-2.090", (49.78-53.9mm)		
72101	72103	Size R, 2.100-2.210", (53.34-56.13mm)		
72221	72223	Size S, 2.220-2.400", (56.39-60.96mm)		
72411	72413	Size T, 2.410-2.560", (61.21-65.02mm)		
72571	72573	Size U, 2.570-2.860", (65.28-72.64mm)		
	72873	Size W, 2.870-3000", (72.97-76.20mm)		



RING USE GUIDE		
SADDLE HEIGHTS FOR ALL WEAVER RINGS		
RING SIZE	SADDLE HEIGHT	FITS OBJECTIVE LENS SIZE
1" Low	0.089	Up to 40mm
1" Medium	0.168	40 - 42mm
1" High	0.332	42 - 44mm
1" Extra High	0.560	44 - 60mm
1" Super High	0.706	50mm+
1" See-Thru	0.750	50mm+
30mm Low	0.288	Up to 35mm
30mm High	0.500	40 - 50mm
30mm X-High	0.688	50mm
33mm Low	0.168	Up to 38mm
1" Tip-Off	0.25	Up to 38mm
1" Tip-Off See-Thru	0.750	Up to 50mm

DETACHABLE TOP MOUNT BASES					
PART#	ID	STAMP	PART#	ID	STAMP
48011	11		48043	43	
48012	12		48044	44	
48013	13		48045	45	
48014	14		48510	45S	
48015	15		48046	46	
48016	16		48004	46S	
48017	17		48502	46M	
48018	18		48047	47	
48019	19		48003	47S	
48020	20A		48503	47M	
48021	21		48048	48	
48022	22		48049	49A	
48023	23		48050	50	
48024	24		48053	53	
48025	25		48054	54	
48026	26		48055	55	
48027	27		48057	57	
48028	28		48058	58	
48029	29		48059	59	
48030	30		48064	60A	
48031	31		48061	61	
48032	32		48002	61S	
48035	35		48504	61M	
48006	35S		48060	61A	
48500	35M		48062	62	
48036	36		48069	63B	
48005	36S		48447	63BS	
48501	36M		48065	65	
48039	39		48067	67	
48040	40A		48068	68	
48041	40AS		48070	70	
48428	40AM		48071	71	
48042	42		48010	71A	
			48429	402M	

GRAND SLAM BASES					
PART#	ID	STAMP	PART#	ID	STAMP
48222	S20A		48255	S436	
48222	S23		48256	S437	
48223	S25		48257	S438	
48224	S35		48259	S440	
48225	S36		48261	S442	
48243	S40A		48262	S443	
48226	S45		48265	S447	
48227	S46		48267	S449	
48228	S47		48268	S450	
48229	S48		48269	S452	
48244	S49A		48271	S454	
48230	S54		48272	S455	
48231	S55		48274	S457	
48232	S57		48275	S459	
48233	S59		48276	S460	
48234	S61		48277	S461	
48245	S61A		48278	S462	
48235	S68		48280	S464	
48246	S71A		48281	S465	
48237	S72		48282	S466	
48238	S79		48283	S468	
48239	S84		48284	S469	
48241	S91		48285	S470	
48247	S402				
48286	S418				
48249	S430				
48250	S431				
48251	S432				
48252	S433				
48253	S434				
48254	S435				

MAKE, MODEL OF FIREARM COLOR OF MODEL NUMBER INDICATES TYPE OF FINISH Gloss Black Matte Black Silver	NOTES	TOP MOUNT BASES				SEE THRU MOUNTS	PRO-VIEW MOUNTS	SIDE MOUNT	PIVOT MOUNT BASES			GRAND SLAM™ STEEL TOP MT. BASES				
		STANDARD		EXTENSIONS					STANDARD			EXTENSIONS				
		REAR	FRONT	1-PIECE	REAR	FRONT	Complete No Bases	Systems Required	BASE	REAR	FRONT	1-PIECE	REAR	FRONT	REAR	FRONT
SMITH & WESSON (CONT.)																
• L & K Frame Revolvers (not factory drilled/tapped) Silver		-	-	48642	-	-	-	-	-	-	-	-	-	-	-	-
• 41		-	-	48634	-	-	-	-	-	-	-	-	-	-	-	-
• 2206 TGT Silver	17	-	-	62 407S	-	-	-	-	-	-	-	-	-	-	-	-
SPRINGFIELD																
• 03	6 - 7	54	55	-	-	-	-	1	154	155	-	S54	S55	-	-	
• 03-A3	8	59	45	-	-	-	-	-	-	-	-	S59	S45	-	-	
SPRINGFIELD ARMOY																
• 1911 A-2 SASS Conversion		-	-	26	-	-	-	-	-	-	-	-	-	-	-	-
STEVENS																
• 26		22	22	-	-	-	-	2	-	-	-	-	-	-	-	-
• 27 octagon		31	31	-	-	-	-	-	-	-	-	-	-	-	-	-
• 53		16	21	-	-	-	-	2	-	-	-	-	-	-	-	-
• 56, 66		12	13	-	-	-	-	2	-	-	-	-	-	-	-	-
• 57, 76, 4171/2, 762		12	12	-	-	-	-	2	-	-	-	-	-	-	-	-
• 110E		61	46	-	-	402	49717	49818	1	161	146	-	S61	S46	-	S402
Matte		61M	46M	-	-	402M	-	-	-	-	-	-	S61	S46	-	S402
Silver		61S	46S	-	-	402S	49729	-	-	-	-	-	-	-	-	-
• 322, 325		-	-	-	-	-	-	-	1	-	-	-	-	-	-	-
• 416		18	17	-	-	-	-	-	2	-	-	-	-	-	-	-
• 417		15	15	-	-	-	-	-	2	-	-	-	-	-	-	-
• 418, 4181/2		16	16	-	-	-	-	-	2	-	-	-	-	-	-	-
STEVENS-SPRINGFIELD																
• 83		16	21	-	-	-	-	-	2	-	-	-	-	-	-	-
• 85, 87, 872		12	12	-	-	-	-	-	2	-	-	-	-	-	-	-
• 840	4 14	-	-	-	-	-	-	-	1	-	-	-	-	-	-	-
STEYR MANNLICHER																
• L, SL		-	-	-	-	-	-	-	-	-	-	-	S431	S431	-	-
• M, S		-	-	-	-	-	-	-	-	-	-	-	S432	S432	-	-
TAURUS																
• Like S & W L, K, & N Frame revolvers (factory drilled) Silver	8 - 17 8 - 17	-	-	401 401S	-	-	-	-	-	-	-	-	-	-	-	-
THOMPSON CENTER																
• Contender Handgun, Carbine Silver		-	-	92A 92AS	-	-	-	-	-	-	-	-	-	-	-	-
• Scout (Rifle & Pistol)		-	-	404	-	-	-	-	-	-	-	-	-	-	-	-
• TCR		-	-	405	-	-	-	-	-	-	-	-	-	-	-	-
• ThunderHawk, Fire Hawk (2 ea. per pkg.) Silver (2 ea. per pkg.)		406	406	-	-	-	49736	-	-	-	-	-	-	-	-	-
• Traditional Style Muzzleloaders (New Englander)		406S	406S	-	-	-	-	-	-	-	-	-	-	-	-	-
• Encore, Omega	19	-	-	408 410	-	-	-	-	-	-	-	-	-	-	-	-
• System 1, Black Diamond (2 ea. per pkg.) Silver		411 411S	411 411S	-	-	-	-	-	-	-	-	-	-	-	-	-
TIKKA																
• Tikka (flat receiver)		61	61	-	-	-	49727	-	-	161	161	-	S61	S61	-	-
• Sako Design (tapered dovetail)		67	65	-	-	-	-	-	-	-	-	-	-	-	-	-
TRADITIONS																
• Whitetail (octagon receivers)	17	61A	61A	-	-	-	-	-	-	-	-	-	S61A	S61A	-	-
• In-Line Buckhunter (round receivers); Peder Soli Matte	17	418M	418M	-	-	-	-	-	-	-	-	-	-	-	-	-
U.S. CARBINE																
• Cal. 30 M1	20	-	-	-	-	-	-	-	M	-	-	-	-	-	-	-
ULTRA LIGHT ARMS																
• 40		-	-	-	-	-	-	-	-	-	-	-	S447	S462	-	-
VALMET																
• TAPERED DOVETAIL, SAKO DESIGN		67	65	-	-	-	-	-	-	-	-	-	-	-	-	-
VOERE																
• 2130	4	28	28	-	-	-	-	-	-	-	-	-	-	-	-	-
• 2150, 2165/1, 2165/2, 2165/3, 2165/4 (Mauser Action) Silver		45 45S	46 46S	-	-	402 402S	49721	-	-	-	-	-	S45	S46	-	S402
WEATHERBY																
• Mark V mag. cal. except .240 mag. Matte		424 424M	35 35M	-	-	-	-	-	-	-	-	-	S460	S470	-	-
• Mark V std cal inc 240mag cntnfr pistol, 224 VmntMstr, Ultra Lightweight		36 36M 36S	415 415M 415S	-	-	-	-	-	-	-	-	-	-	-	-	-
Matte		36M	415M	-	-	-	-	-	-	-	-	-	-	-	-	-
Silver		36S	415S	-	-	-	-	-	-	-	-	-	-	-	-	-
• Vanguard Silver	1	36 36S	35 35S	-	-	-	-	-	-	-	-	-	S36	S35	-	S40A
Matte		36M	35M	-	-	-	-	-	-	-	-	-	S36	S35	-	S40A
• Other models with FN Mauser actions Silver		45 45S	46 46S	-	-	402 402S	49721	-	5	-	-	-	S45	S46	-	S402
• Acu-Mark		-	-	-	-	-	-	-	-	-	-	-	-	-	-	-
• Acu-Mark Magnum		-	-	-	-	-	-	-	-	-	-	-	S470	S460	-	-
WESTERN FIELD																
• 712	6	-	-	-	-	-	-	-	1	-	-	-	-	-	-	-
• 730		25	11	-	-	-	-	-	-	-	-	-	-	-	-	-
• 740		-	-	63B	-	-	49713	49817	-	-	-	163A	-	-	-	-
• 750		67	65	-	-	-	-	-	-	-	-	-	-	-	-	-
• 770		55	20A	-	-	-	-	-	-	-	-	-	S55	S55	-	-

MAKE, MODEL OF FIREARM COLOR OF MODEL NUMBER INDICATES TYPE OF FINISH Gloss Black Matte Black Silver	NOTES	TOP MOUNT BASES				SEE THRU MOUNTS Complete Systems No Bases Required	PRO-VIEW MOUNTS	SIDE MOUNT	PIVOT MOUNT BASES			GRAND SLAM™ STEEL TOP MT. BASES				
		STANDARD		EXTENSIONS					STANDARD			EXTENSIONS				
		REAR	FRONT	1-PIECE	REAR	FRONT	BASE	REAR	FRONT	1-PIECE	REAR	FRONT	REAR	FRONT	REAR	FRONT
WESTERN FIELD (CONT.)																
• 772		-	-	80	-	-	-	-	-	-	-	-	-	-	-	
• 775, 780		55	55	-	-	-	-	-	155	155	-	S55	S55	-	-	
WHITE																
• "W" Series		-	-	-	-	-	-	-	-	-	-	S455	S442	-	-	
WINCHESTER (Includes Ranger Models)																
• 03, 63		19	22	-	-	-	-	2	-	-	-	-	-	-	-	
• 06, 62, 62A, 90 octagon bbl.		32	32	-	-	-	-	-	-	-	-	-	-	-	-	
• 05, 07, 10		20A	17	-	-	-	-	-	-	-	-	-	-	-	-	
• 42		-	-	-	-	-	-	2	-	-	-	-	-	-	-	
• 43		18	18	-	-	-	-	-	-	-	-	-	-	-	-	
• 52 (hole spacing different)	6 - 9	25	57	-	-	-	-	2	-	-	-	S25	S57	-	-	
• 52 (hole spacing same)	6 - 9	46	46	-	-	402	-	2	-	-	-	S46	S46	S402	S402	
<i>Matte</i>	9	46M	46M	-	-	402M	-	-	-	-	-	S46	S46	S402	S402	
<i>Silver</i>	9	46S	46S	-	-	402S	-	-	-	-	-	-	-	-	-	
• Lever Actions 53, 55, 64, 65, 66, 71, 1886, 1892, 95; 1895	4	-	-	-	-	-	-	3A	-	-	-	-	-	-	-	
• 54, early Model 70 (Below Serial #66,350)	6	48	46	-	-	402	-	1	148	146	-	-	-	-	-	
• 57, 69		12	13	-	-	-	-	2	-	-	-	-	-	-	-	
• 60, 67, 68	6	21	21	-	-	-	-	-	-	-	-	-	-	-	-	
• 61 round bbl.		19	13	-	-	-	-	2	-	-	-	-	-	-	-	
• 61 octagon bbl.		25	32	-	-	-	-	2	-	-	-	-	-	-	-	
• 69A, 72, 47		12	17	-	-	-	-	2	-	-	-	-	-	-	-	
• 70 Long Action (hole spacing same); 300 Magnum	9	47	46	96	-	402	49718	49824	1	147	146	-	S47	S46	S468	S402
<i>Matte</i>	9	47M	46M	-	-	402M	-	-	-	-	-	-	S47	S46	S468	S402
<i>Silver</i>	9	47S	46S	-	-	402S	49730	-	-	-	-	-	-	-	-	-
• 70 Long Action (hole spacing different); 70 Super Express	9	49A	46	-	-	402	-	-	-	-	-	-	S49A	S46	-	S402
• 70 Short Action		47	46	99	-	402	49718	49824	1	147	146	-	S47	S46	S468	S402
<i>Matte</i>		47M	46M	-	-	402M	-	-	-	-	-	-	S47	S46	S468	S402
<i>Silver</i>		47S	46S	-	-	402S	49730	-	-	-	-	-	-	-	-	-
• 70 Coyote SA 300 Win. Mag.		47	46	-	-	-	-	-	-	-	-	-	-	-	-	-
• 74		12	12	-	-	-	-	2	-	-	-	-	-	-	-	-
• 75 Sporter		15	30	-	-	-	-	2	-	-	-	-	-	-	-	-
• 75 Target		15	16	-	-	-	-	2	-	-	-	-	-	-	-	-
• 77		15	32	-	-	-	-	2	-	-	-	-	-	-	-	-
• 88, 100		-	-	53	-	-	49725	-	-	-	153	-	-	-	-	-
• 94 pre-1964		-	-	-	-	-	-	3D	-	-	-	-	-	-	-	-
• 94 after 1964, 94 Trapper		-	-	-	-	-	-	3B	-	-	-	-	-	-	-	-
• 94 Big Bore 375		-	-	-	-	-	-	3C	-	-	-	-	-	-	-	-
• 94 Angle-Eject Big Bore, 94/10		95	403	-	-	-	-	-	-	-	-	-	-	-	-	-
• 94 Angle-Eject (except earliest models)		95	94	-	-	-	49716	49816	-	-	-	-	-	-	-	-
• 94/22	16	-	-	TO-10	-	-	-	-	-	-	-	-	-	-	-	-
• 520		85	85	-	-	-	-	-	-	-	-	S85	S85	-	-	-
• 670; 770		47	46	-	-	402	49718	-	1	147	146	-	S47	S46	S468	S402
<i>Matte</i>		47M	46M	-	-	402M	-	-	-	-	-	-	S47	S46	S468	S402
<i>Silver</i>		47S	46S	-	-	402S	49730	-	-	-	-	-	-	-	-	-
• 777		71	71	-	-	-	-	-	-	-	-	-	-	-	-	-
• 1200- See Converta-Mount		-	-	-	-	-	-	-	-	-	-	-	-	-	-	-
• 1300 / 1400 <i>Matte</i>		-	-	416M	-	-	-	-	-	-	-	-	-	-	-	-
• X-150 Muzzleloader <i>Matte</i>		418M	418M	-	-	-	-	-	-	-	-	-	-	-	-	-

NOTES	
1. Shimming is probably required for perfect scope alignment.	11. The Weaver type base built into this rifle will accept any Detachable Top Mount Weaver Ring.
2. Rear base may require modifications for correct fit to military actions.	12. Rifle has a Grooved Receiver for Tip-Off Rings.
3. Front base may require modification for correct fit.	13. RUGER MARK II PISTOL
4. Gun will have to be drilled and tapped.	• Weaver only offers a clamp on base with 1" rings (System 306)
5. Front base screws must be shortened by grinding.	• Ruger supplies a short base and 1" rings with factory drilled and tapped pistols.
6. May require bolt and/or safety alteration, otherwise firearm cannot function safely and properly. Consult with a qualified gunsmith.	• Contact Ruger at (602) 778-6555 for a longer base and 30mm rings.
7. Pivot mount usable only on sporterized guns with suitable front and middle signs.	14. Bolt clearance problem may exist and scope will not be centered.
8. Remove rear sight to use.	15. Base accepts Tip-Off Rings only.
9. The handiest way to pinpoint the correct base for Winchester 52 & Winchester 70 Long Action Rifles is to check the spacing of the tapped holes for the rear base and compare it to the hole spacing for the front base. Does it have:	16. TO-9, TO-10 & TO-11 Bases accept either Detachable Top Mount Rings or Tip-Off Rings. Each have crossbolt slots and 3/8" grooves for both applications.
HOLE SPACING THE SAME HOLS SPACING IS DIFFERENT	17. Must be factory drilled and tapped.
Model 52 Use 46 & 46 Model 52 Use 25 & 57	18. One-piece base attaches to barrel and extends back over receiver.
Model 70 Use 47 & 46 Model 70 Use 49A & 46	19. Requires the use of Thompson/Center Base Adaptor.
10. The Weaver type base built into this rifle will accept Weaver rings but our highest ring (1" See-Thru #49513) still isn't high enough to clear the front sight.	20. Requires drilling and tapping 4 holes in receiver and relief space cut in stock to clear base.
	21. Rear base is positioned on top of receiver and front base is positioned on the barrel. Drilling & tapping required. One-piece base mounts with 2 set screws and newer guns are factory drilled tapped.



P.O. Box 39 • Onalaska, WI 54650 • (800) 635-7656

www.weaver-mounts.com

www.simmons-mounts.com

© Copyright 2003 ATK



P.O. Box 39
N5549 County Trunk Z
Onalaska, WI 54650

**PLACE
POSTAGE
HERE**